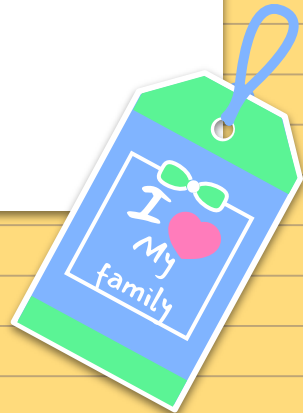
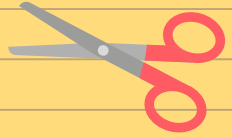


# Topic: *MY FAMILY*

**Objective: Through doing 2–3 communicative tasks, working in groups and individually, consolidate vocabulary and grammar skill by using correctly 6–15 words related to family.**





# Topic: *MY FAMILY*

**Objective: Through doing 2–3 communicative tasks, working in groups and individually, consolidate vocabulary and grammar skill by using correctly 6–15 words related to family.**



# What we are going to do?

01

## Family

We will repeat family members.

02

## Possessive Adjective

We will repeat and correctly use possessive's

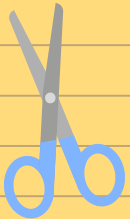
03

## Family tree

Complete family tree

04

## Check yourself





# TASK 1

Check yourself V

Write these words in the correct group:

Male (boys)	Female (girls)	both
<i>dad, brother, grandfather, son, uncle, nephew</i>	<i>mum, sister, grandmother, daughter, aunt, niece</i>	<i>baby, child, cousin</i>

## TASK 2

**Match them up!** *Match the sentences to the correct family word.*

Your mum and dad are also called your ...

aunt.

Your mum or dad's father is your ...

grandmother.

Your mum or dad's sister is your ...

parents.

Your brother or sister's son is your ...

grandfather.

Your mum or dad's mother is your ...

nephew.

Your mum or dad's brother is your ...

cousins.

Your brother or sister's daughter is your ...

uncle.

Your aunt and uncle's children are your ...

niece.

## TASK 2

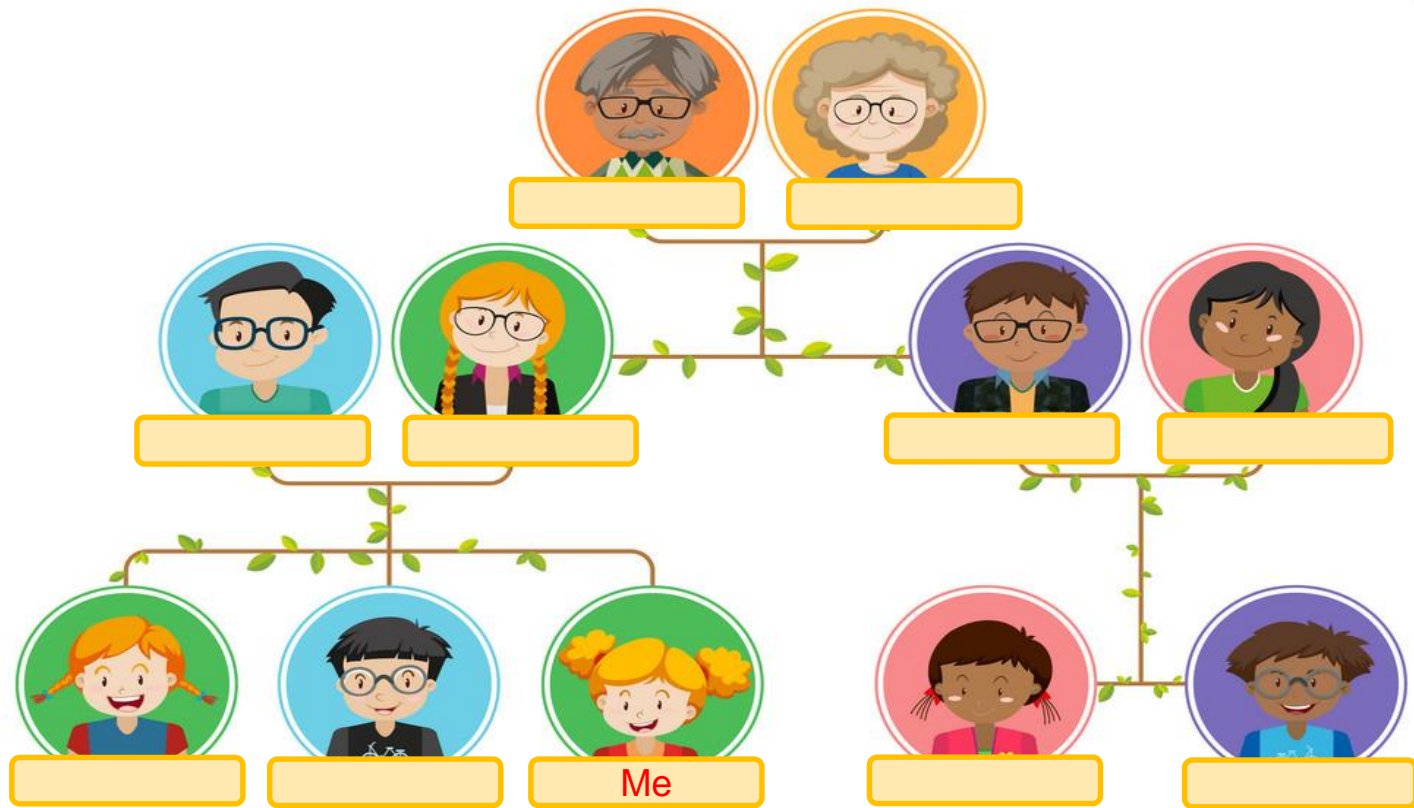
Check yourself ✓

**Match them up!** *Match the sentences to the correct family word.*

- |   |              |
|---|--------------|
| Your mum and dad are also called your ...     | aunt.        |
| Your mum or dad's father is your ...          | grandmother. |
| Your mum or dad's sister is your ...          | parents.     |
| Your brother or sister's son is your ...      | grandfather. |
| Your mum or dad's mother is your ...          | nephew.      |
| Your mum or dad's brother is your ...         | cousins.     |
| Your brother or sister's daughter is your ... | uncle.       |
| Your aunt and uncle's children are your ...   | niece.       |

# Who are they?

## FAMILY TREE



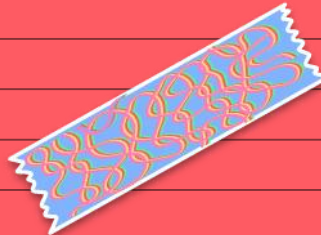
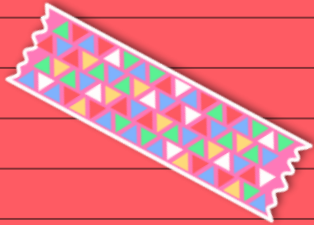


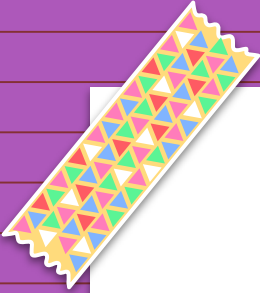


# FEEDBACK



**Using plickers cards, choose the correct answer for 1-5 sentences**



- 
- 1. Draw your own family tree.**
  - 2. And write down your family members using possessive adjectives.**



**What we have  
learned today?**



**See you  
after holiday!**

